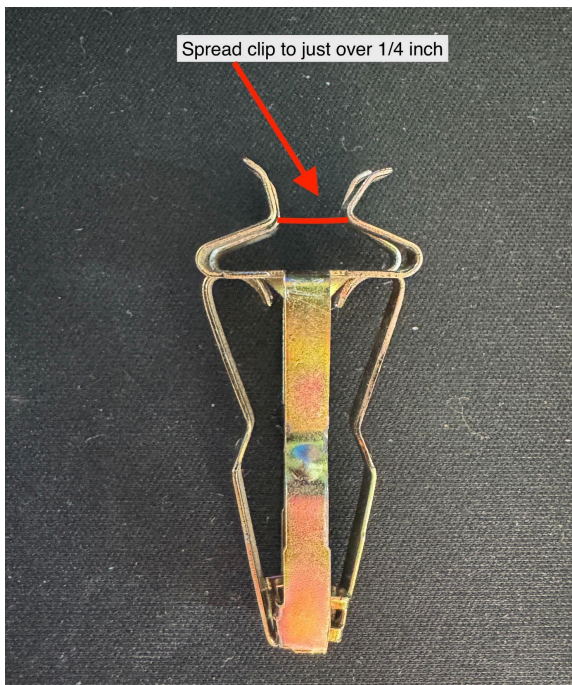
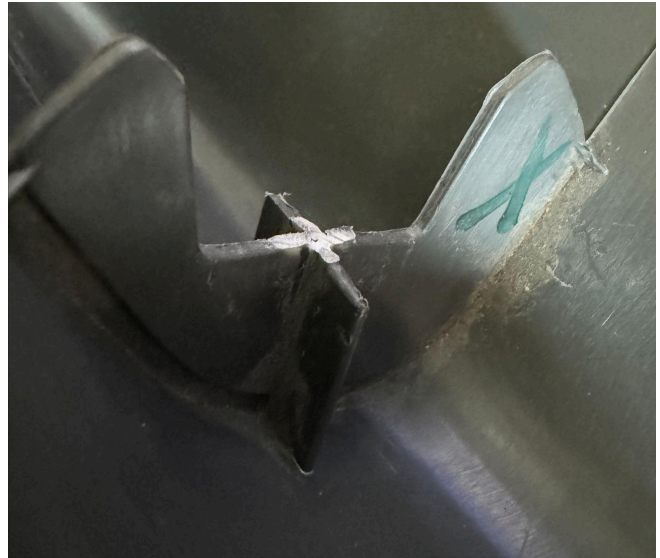


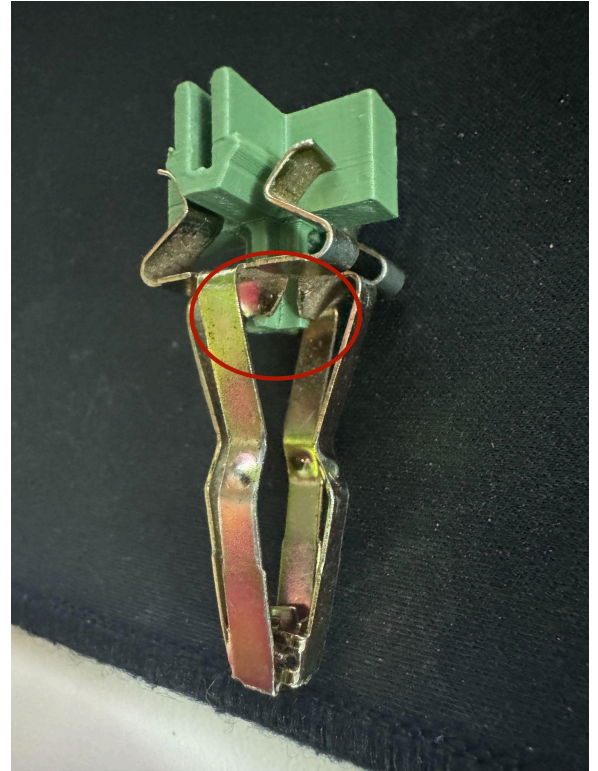
## GMT800 A Pillar Clip Repair Install Instructions

Step 1: Cut remainder of factory clip off flush to ensure Clip Repair sits all the way down flat. Should look similar to this. ->

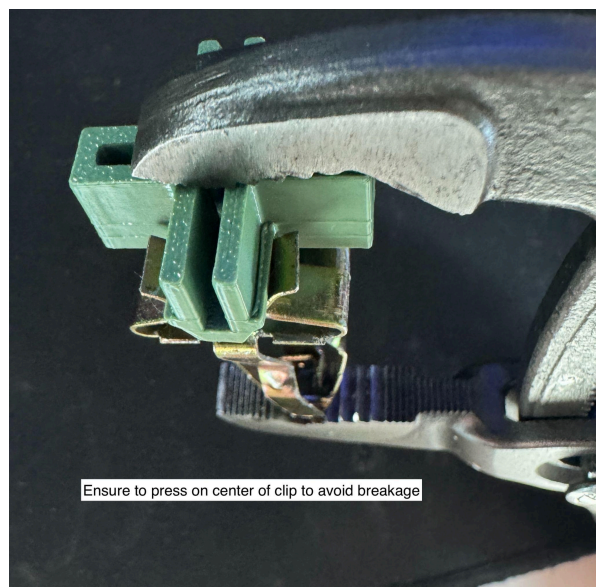


Step 2: Take the original metal clip and spread the base out to just over  $\frac{1}{4}$  inch. As the Repair Clip is wider than the factory plastic piece this ensures a snug fit without breaking the plastic during install

Step 3: Spread the Center portion of the metal clip out enough to where the tip of the repair clips goes in without too much resistance. You still want the bottom half to have some resistance to keep the clip from being too loose. Note: Red Circle on Image!



Step 4: Use a Vice or Pliers, vice is preferred for even pressure, to push the A Pillar Repair piece into the metal clip. If using pliers ensure to press center on the clip to avoid sideways stress and prevent breakage.



Step 5: Glue center of Repair Bracket with epoxy or super glue to bond the clip to the plastic. Secure the clip to the A Pillar and let glue cure for best results!

For future removal I found super glue to hold fine but not melt to the plastic if you plan to remove the clip in the future. Hope these instructions help and reach out if you have any questions or run into any issues!

**Thank you for your support!**

